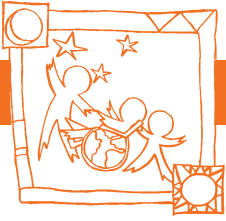


early steps



EARLY INTERVENTION

& THE NC INFANT-TODDLER PROGRAM



The first three years of your infant or toddler's life is an exciting time for you and a very important time for your child's growth and development. Every child grows and develops at his or her own pace and children who have special needs or a disability may need extra help and support to grow and learn.

Part C of the federal law, The Individuals with Disabilities Education Improvement Act (IDEA), says that infants and toddlers (birth to age three) who are delayed in their development may be eligible to receive early intervention services. In North Carolina, those services are provided to children and families through **The North Carolina Infant-Toddler Program**. There are 16 Children's Developmental Services Agencies (CDSAs) across the state that provide families with access to Infant-Toddler Program services.

free services

A variety of supports and services are available and an *Early Intervention Service Coordinator*, assigned by your local CDSA, will guide you through the process described on the back of this document. Some services are free and include:

EVALUATION & ASSESSMENT

SERVICE COORDINATION

ACTIVITIES RELATED TO DEVELOPING A PLAN FOR YOUR CHILD

ACTIVITIES RELATED TO MAKING SURE YOUR RIGHTS ARE PROTECTED & RESPECTED



other supports & services

Other supports and services, as appropriate, will be available on a sliding fee scale or reduced rate. Medicaid is billed for services. Other insurance is billed with your permission. Services will be provided in the most convenient and natural places including your home or child's day-care setting and may include:

HEARING AND VISION SERVICES

FAMILY SUPPORT

THERAPY SERVICES SUCH AS SPEECH-LANGUAGE, OCCUPATIONAL AND/OR PHYSICAL THERAPY

ASSISTIVE TECHNOLOGY SERVICES & DEVICES

OTHER SUPPORTS & SERVICES

To learn more about early intervention services and how you can reach your local CDSA, contact:

**The NC
Infant-Toddler Program**
1-855-623-2759
www.beeearly.nc.gov

ECAC
Exceptional Children's Assistance Center
1-800-962-6817
www.ecac-parentcenter.org

**The Central Directory of Resources
at FSN - Family Support Network**
1-800-852-0042
www.fsnn.org

ECAC is NC's Parent Training and Information Center (PTI)
and all services are provided at no cost.

THE INFANT-TODDLER PROGRAM STEP-BY-STEP

This is an overview of the steps your family may take while in the Infant-Toddler Program.



first steps:

**GETTING
STARTED**

1

REFERRAL

- Anyone, including a parent, having concerns about your child may refer him or her to the Infant-Toddler Program.
- Referrals may be made by telephone, fax, in writing, or in person to the local CDSA.
- When the referral is received, an Early Intervention Service Coordinator will be assigned to assist your family.

2

INITIAL CONTACTS

- During your initial contacts with a service coordinator and other CDSA staff, you will be asked about your child, his or her development, and medical history.
- These first meetings will help us learn your concerns and priorities as a family, your child's current strengths, and areas needing improvement, as well as successes and challenges you may encounter during daily routines.

3

EVALUATIONS AND ASSESSMENTS

- In order to determine if your child is eligible for Infant-Toddler Program services, an evaluation of your child's current abilities may be completed.
- The information gathered through an assessment will show us your child's strengths and any areas of development that might benefit from early intervention support.

next steps:

SERVICES

4

INDIVIDUALIZED FAMILY SERVICE PLAN (IFSP)

- Once your child is determined eligible for the Infant-Toddler Program, a service coordinator will guide the development of an IFSP.
- Development of the initial IFSP must occur within 45 days of the referral.

5

DELIVERY OF SERVICES

- Your child will receive the services as outlined in the IFSP.
- Services listed in the IFSP should begin no later than 30 days after the IFSP is developed and signed by the family.

Parents may choose to proceed at their own pace, stop eligibility determination, or withdraw from the program at any time.

6

IFSP REVIEWS

- As the needs of your child and family change, supports and services may also need to change.
- The IFSP will be reviewed at least every six months to make sure it still fits your priorities and your child's and family's needs.
- You can request an update or review of your IFSP at any time.

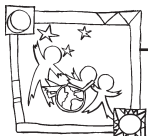
future steps:

**LEAVING THE
PROGRAM**

7

TRANSITION

- Children transition out of the Infant-Toddler Program when they are no longer eligible for the program or when they turn three years of age.
- Transition plans are outlined in the IFSP.



ECAC, Exceptional Children's Assistance Center • 1-800-962-6817 • www.ecac-parentcenter.org



State of North Carolina • Department of Health and Human Services • Division of Public Health
www.ncdhhs.gov • www.beeearly.nc.gov

NC DHHS is an equal opportunity employer and provider.
10,000 copies of this public document were printed at a cost of \$1041.00 or \$0.104 each. 06/13